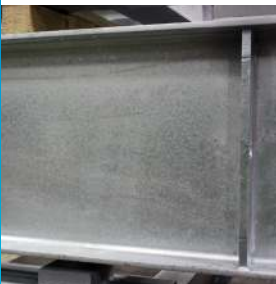


## Designed for Performance Galvanized for Longevity



### Premium Performance

POWERCELL® PDX® load cells deliver the same advanced weighing capabilities that you get with our premium concrete-deck scale. They provide the highest accuracy and unequalled reliability, even in extreme climates and environments.



### Galvanized Longevity

The scale's steel frame is hot-dip galvanized for an exceptionally long life. By completely covering all steel surfaces, the galvanizing process provides superior rust protection. Galvanized steel has proven its ability to resist corrosion in industrial environments for many decades.



### Lightning Protection

The StrikeShield™ lightning protection system helps prevent costly downtime by using multiple levels of protection to safeguard your entire scale system: load cells, cables, and terminal. Tests by independent laboratories have proven its ability to withstand lightning strikes.



### Proven Durability

Using the "Module Masher" accelerated-life-cycle test stand, we have tested actual scale modules for 1 million cycles with a minimum live load of 60,000 lb. These tests verify the scale's ability to handle the real-world demands of vehicle weighing.



### VTC191 Truck Scale

Model VTC191 delivers premium performance and extreme longevity at an affordable price. This concrete-deck truck scale is designed to weigh highway vehicles in commercial-duty applications. By combining POWERCELL® PDX® technology with a galvanized finish, the VTC191 truck scale has the staying power to handle your work load for many years to come:

- POWERCELL® PDX® load cells use advanced diagnostic capabilities to ensure maximum longevity with minimum maintenance.
- The scale's steel frame has a galvanized finish for a long, maintenance-free life.
- The scale is designed to be weatherproof, resisting rust, moisture damage, and lightning damage.

## Preliminary

# VTC191 Truck Scale

## Concrete Deck Weighbridge

| Specifications             | US  | Metric   |
|----------------------------|---|--|
| Concrete Thickness         | 11.25 in  | 286 mm   |
| Scale Widths               | 10 ft, 11 ft  | 3 m, 3.4 m                                       |
| Scale Lengths              | 17.5 to 120 ft  | 5.3 to 36.6 m                                    |
| Profile                    | 14.5 in   | 368 mm   |
| Module Lengths             | 17.5 ft, 20 ft  | 5.3 m, 6.1 m                                     |
| Capacity*                  | 120,000 lb ( $\leq$ 20 ft)<br>200,000 lb ( $>$ 20 ft) | 60 tons ( $\leq$ 6.1 m)<br>100 tons ( $>$ 6.1 m) |
| Concentrated Load Capacity | 80,000 lb   | 40 tons  |
| eMin                       | 20 lb   | 10 kg  |
| nMax                       | 10,000 divisions                                      |  |
| Steel Type                 | ASTM A 123, hot-dip galvanized                        |  |
| Foundation Type            | Variable Footer                                       |  |
| NTEP Certificate           | 14-099  |  |

\*Note: 200,000 lb (100 tons) is the maximum gross capacity that any truck scale can have and still maintain 20-lb (10-kg) increments in legal-for-trade applications.



Hot-dip galvanizing coats the steel surface with a protective layer of zinc. By dipping the steel in a bath of molten zinc, the process covers the steel components completely, inside and out. Galvanized steel provides maintenance-free corrosion protection for the life of your scale.

### Applications

Suitable for weighing over-the-road vehicles in a wide variety of applications:

- Agriculture
- Bulk Foods
- Landfills
- Warehouses
- Scrap Metals
- Utilities
- Chemicals

| Features                           | Benefits   |
|------------------------------------|--|
| StrikeShield™ Lightning Protection | Prevents lightning damage to load cells and other equipment.         |
| Galvanized Finish                  | Protects steel against corrosion even in the harshest environments.  |
| 50t POWERCELL® PDX® Load Cells     | Stainless steel load cells provide highest accuracy and reliability. |
| Top Access to Load Cells           | Makes it easy to perform inspections and maintenance.                |

### Options:

- Remote Displays
- Scale Terminals
- Unattended Driver Terminals
- DataBridge™ Vehicle Scale Software



Remote Displays



Scale Terminals



Unattended Terminals



Software



Produced in a facility that is



### Mettler-Toledo, LLC

1900 Polaris Parkway  
Columbus, Ohio 43240  
Tel. (800) 786-0038  
(614) 438-4511  
Fax (614) 438-4900

Subject to technical changes.  
© 2015 Mettler-Toledo, LLC  
05/2015  
30138562

[www.mt.com/vehicle](http://www.mt.com/vehicle)

For more information